

# ARCHEOWORKS INC.

**Detailed Site Location Information for:  
Stage 2 Archaeological Assessment (AA):  
Proposed Barrie Solar Projects REA  
Townships of Springwater and Oro-Medonte  
County of Simcoe  
Ontario**

**Project #: 044-SB767-12  
Licencee (#): Jessica Marr (P334)  
PIF#: P334-217-2012**

**Supplementary Document**

**September 19<sup>th</sup>, 2012**

**Presented to:  
*exp Services Inc*  
1595 Clark Blvd.  
Brampton, Ontario  
L6T 4V1  
T: 905.793.9800 ext. 253  
F: 905.793.0641**

**Prepared by:  
*Archeoworks Inc.*  
16715-12 Yonge Street  
Suite #1029  
Newmarket, Ontario  
L3X 1X4  
T: 416.676.5597  
F: 416.676.5810**

**DETAILED SITE LOCATION*****L.P. #8***

<b>Borden Number</b>	None
<b>Site Name</b>	H2
<b>Description of Location</b>	Approximately 650 metres north of Sideroad 5 and 600 metres west of Penetanguishene Road.
<b>Size of Site</b>	Small (less than 10m by 10m)
<b>GPS Device</b>	Trimble GeoXH 3.5G
<b>Universal Transverse Mercator (UTM) grid zone</b>	17T
<b>Recorded GPS Coordinate(s)</b>	<i>See Appendix S-2</i>
<b>Datum</b>	NAD 1983 CSRS
<b>Method of Correction</b>	Base Differential Correction
<b>Accuracy</b>	Less than one metre

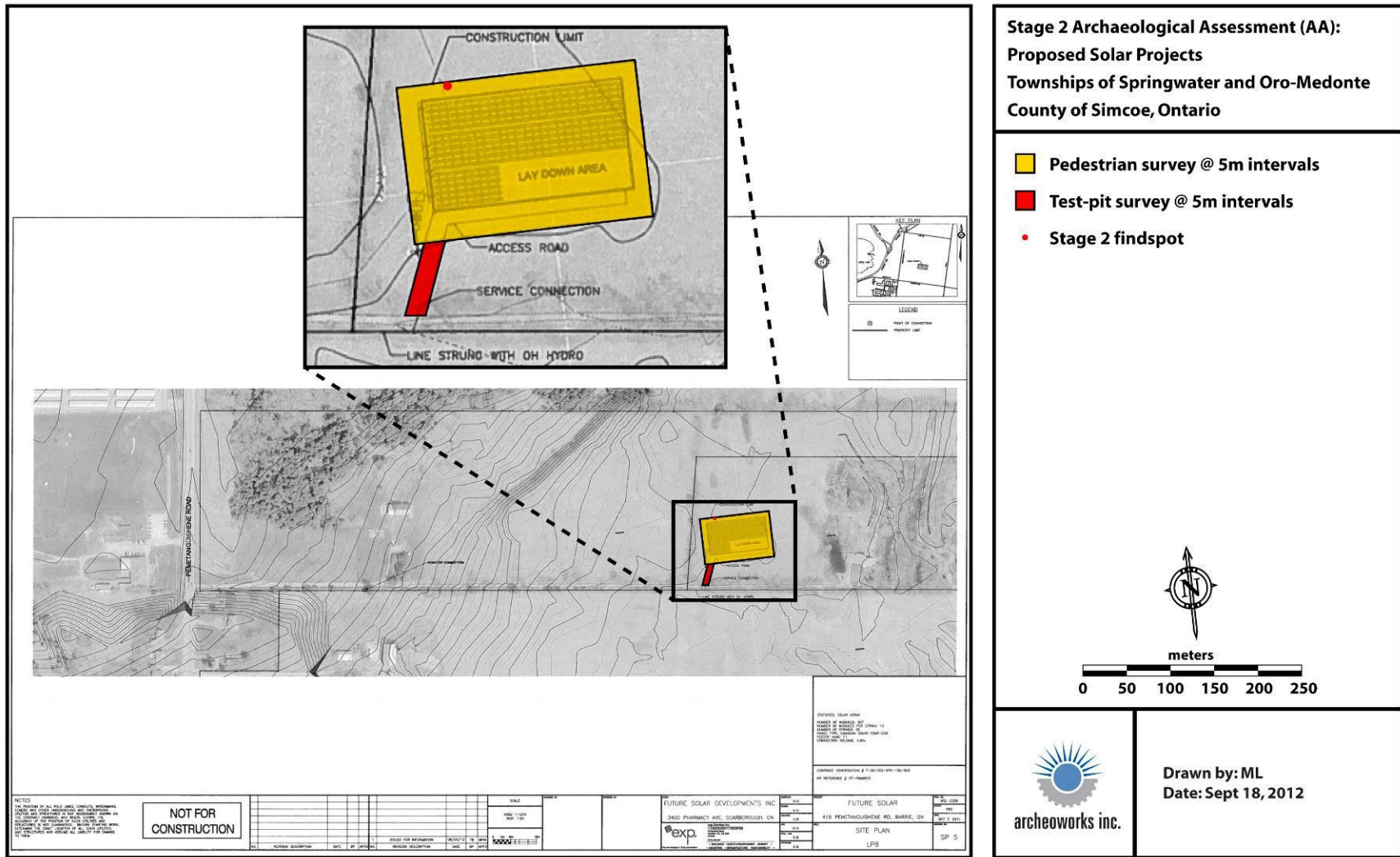
***L.P. #11***

<b>Borden Number</b>	BcGw-88
<b>Site Name</b>	H1
<b>Description of Location</b>	Approximately 120 metres southwest of Penetanguishene Road and 850 metres northwest of Brown Road.
<b>Size of Site</b>	Large (greater than 10m by 10m)
<b>GPS Device</b>	Trimble GeoXH 3.5G
<b>Universal Transverse Mercator (UTM) grid zone</b>	17T
<b>Recorded GPS Coordinate(s)</b>	<i>See Appendix S-2</i>
<b>Datum</b>	NAD 1983 CSRS
<b>Method of Correction</b>	Base Differential Correction
<b>Accuracy</b>	Less than one metre

***L.P. #14-17***

<b>Borden Number</b>	BcGw-89
<b>Site Name</b>	H3
<b>Description of Location</b>	Approximately 100 metres northeast of Penetanguishene Road and 960 metres southeast of Old Barrie Road West.
<b>Size of Site</b>	Large (greater than 10m by 10m)
<b>GPS Device</b>	Trimble GeoXH 3.5G
<b>Universal Transverse Mercator (UTM) grid zone</b>	17T
<b>Recorded GPS Coordinate(s)</b>	<i>See Appendix S-2</i>
<b>Datum</b>	NAD 1983 CSRS
<b>Method of Correction</b>	Base Differential Correction
<b>Accuracy</b>	Less than one metre

**APPENDIX S-1: Detailed Figures**



**Figure S-1: Stage 2 Archaeological Assessment with of L.P. #8 Location, with findspots marked.**

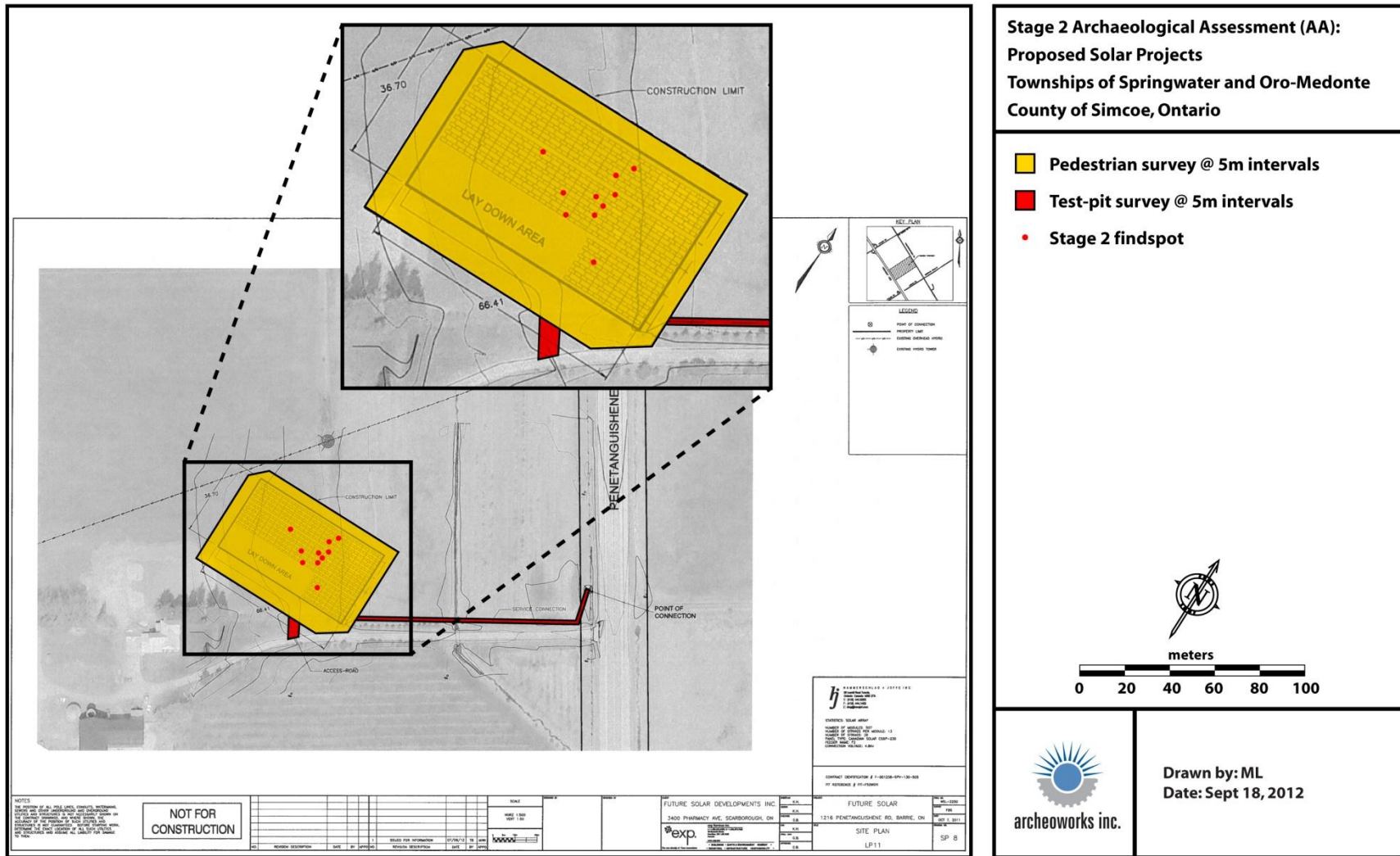


Figure S-2: Stage 2 Archaeological Assessment with of L.P. #11 Location, with findspots marked.

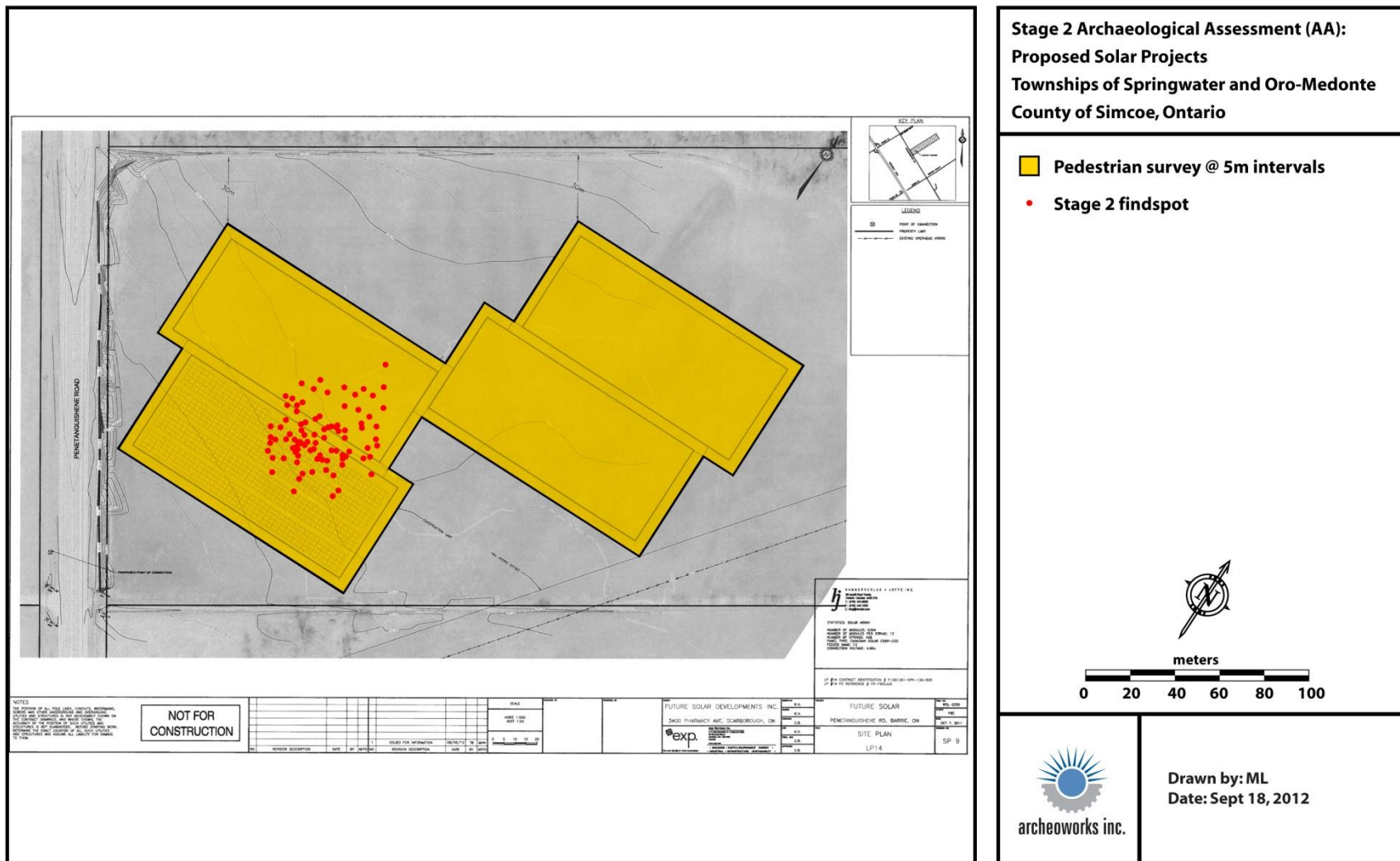


Figure S-3: Stage 2 Archaeological Assessment of L.P. #14-17 Location, with findspots marked.

**APPENDIX S-2: GPS Coordinates**

**H1 (BcGw-88) Site**

Location	Coordinates
Northeast corner	17T 605241 4925157
Northwest corner	17T 605194 4925157
Southeast corner	17T 605241 4925114
Southwest corner	17T 605194 4925114
Centre of the site	17T 605217 4925135
FS (Findspot) 2	17T 605215 4925146
FS4	17T 605212 4925146
FS1	17T 605241 4925143
FS3	17T 605213 4925147
FS5	17T 605209 4925140
FS6	17T 605206 4925143
FS7	17T 605196 4925149
FS8	17T 605215 4925153
FS9	17T 605218 4925157
FS10	17T 605216 4925150
FS11	17T 605216 4925150
FS12	17T 605219 4925133
FS13	17T 605210 4925127
FS14	17T 605212 4925128
FS15	17T 605211 4925131
FS16	17T 605210 4925133
FS16	17T 605210 4925133
FS17	17T 605210 4925134
FS18	17T 605208 4925133
FS19	17T 605207 4925131
FS20	17T 605207 4925130
FS21	17T 605199 4925116

FS22	17T 605194 4925114
FS23	17T 605198 4925135
FS24	17T 605220 4925147
FS25	17T 605221 4925141
FS26	17T 605215 4925134
FS27	17T 605212 4925136
FS28	17T 605211 4925137
FS28	17T 605211 4925137
FS29	17T 605212 4925138
FS30	17T 605212 4925139
FS31	17T 605214 4925141
FS31	17T 605214 4925141
FS32	17T 605215 4925140
FS32	17T 605215 4925140
FS33	17T 605211 4925147
FS33	17T 605211 4925147
FS34	17T 605207 4925142
FS34	17T 605207 4925142

**H2 Site**

Location	Coordinates
Northeast corner	17T 608455 4919537
Northwest corner	17T 608455 4919537
Southeast corner	17T 608455 4919537
Southwest corner	17T 608455 4919537
Centre of the site	17T 608455 4919537
FS1	17T 608455 4919537

**H3 (BcGw-89) Site**

Location	Coordinates
Northeast corner	17T 605315 4925537
Northwest corner	17T 605254 4925537
Southeast corner	17T 605315 4925400
Southwest corner	17T 605254 4925400
Centre of the site	17T 605284 4925468
FS1	17T 605283 4925478
FS2	17T 605280 4925475
FS3	17T 605280 4925472
FS4	17T 605281 4925466
FS5	17T 605268 4925468
FS6	17T 605269 4925476
FS7	17T 605265 4925473
FS8	17T 605261 4925475
FS8	17T 605261 4925475
FS8	17T 605261 4925475
FS9	17T 605260 4925478
FS10	17T 605261 4925481
FS11	17T 605256 4925485
FS12	17T 605284 4925485
FS13	17T 605260 4925487
FS14	17T 605259 4925480
FS15	17T 605260 4925491
FS15	17T 605260 4925491
FS16	17T 605262 4925497
FS17	17T 605257 4925497
FS17	17T 605257 4925497
FS18	17T 605254 4925500
FS19	17T 605257 4925501
FS20	17T 605261 4925499

FS21	17T 605262 4925502
FS22	17T 605257 4925509
FS23	17T 605263 4925510
FS24	17T 605269 4925491
FS25	17T 605271 4925490
FS26	17T 605265 4925487
FS27	17T 605269 4925485
FS28	17T 605271 4925486
FS28	17T 605271 4925486
FS28	17T 605271 4925486
FS29	17T 605272 4925486
FS29	17T 605272 4925486
FS30	17T 605272 4925486
FS31	17T 605271 4925485
FS32	17T 605271 4925483
FS33	17T 605270 4925482
FS33	17T 605270 4925482
FS33	17T 605270 4925482
FS34	17T 605272 4925483
FS34	17T 605272 4925483
FS35	17T 605272 4925481
FS35	17T 605272 4925481
FS35	17T 605272 4925481
FS36	17T 605274 4925488
FS36	17T 605274 4925488
FS36	17T 605274 4925488
FS37	17T 605274 4925480
FS37	17T 605274 4925480
FS38	17T 605275 4925478
FS38	17T 605275 4925478
FS39	17T 605274 4925486



FS40	17T 605277 4925486
FS40	17T 605277 4925486
FS41	17T 605278 4925487
FS42	17T 605282 4925486
FS42	17T 605282 4925486
FS43	17T 605283 4925485
FS43	17T 605283 4925485
FS43	17T 605283 4925485
FS44	17T 605282 4925484
FS45	17T 605286 4925486
FS46	17T 605288 4925482
FS46	17T 605288 4925482
FS46	17T 605288 4925482
FS47	17T 605292 4925482
FS47	17T 605292 4925482
FS48	17T 605297 4925474
FS48	17T 605297 4925474
FS49	17T 605298 4925477
FS49	17T 605298 4925477
FS50	17T 605293 4925488
FS50	17T 605292 4925490
FS51	17T 605292 4925490
FS52	17T 605292 4925492
FS53	17T 605291 4925491
FS53	17T 605291 4925491
FS53	17T 605291 4925491
FS54	17T 605287 4925492
FS54	17T 605287 4925492
FS55	17T 605285 4925491
FS55	17T 605285 4925491
FS55	17T 605285 4925491

FS56	17T 605281 4925491
FS57	17T 605277 4925490
FS57	17T 605277 4925490
FS58	17T 605275 4925492
FS59	17T 605267 4925493
FS60	17T 605268 4925495
FS61	17T 605271 4925499
FS61	17T 605271 4925499
FS62	17T 605272 4925501
FS63	17T 605278 4925499
FS63	17T 605278 4925499
FS64	17T 605277 4925497
FS64	17T 605277 4925497
FS64	17T 605277 4925497
FS65	17T 605279 4925500
FS66	17T 605279 4925494
FS67	17T 605281 4925502
FS68	17T 605281 4925501
FS68	17T 605281 4925501
FS68	17T 605281 4925501
FS69	17T 605283 4925500
FS70	17T 605285 4925502
FS71	17T 605287 4925499
FS71	17T 605287 4925499
FS72	17T 605292 4925495
FS72	17T 605292 4925495
FS73	17T 605299 4925496
FS73	17T 605299 4925496
FS74	17T 605301 4925498
FS74	17T 605301 4925498
FS74	17T 605301 4925498

FS75	17T 605306 4925492
FS76	17T 605298 4925501
FS77	17T 605301 4925504
FS77	17T 605301 4925504
FS78	17T 605299 4925506
FS79	17T 605296 4925511
FS80	17T 605291 4925507
FS81	17T 605290 4925508
FS82	17T 605285 4925513
FS83	17T 605291 4925513
FS83	17T 605291 4925513
FS84	17T 605294 4925520
FS84	17T 605294 4925520
FS85	17T 605287 4925522
FS85	17T 605287 4925522
FS86	17T 605282 4925522
FS87	17T 605289 4925528
FS88	17T 605284 4925537
FS89	17T 605280 4925518
FS89	17T 605280 4925518
FS89	17T 605280 4925518
FS90	17T 605279 4925511
FS90	17T 605279 4925511
FS91	17T 605274 4925518
FS92	17T 605269 4925512
FS93	17T 605263 4925515
FS93	17T 605263 4925515
FS94	17T 605265 4925484
FS94	17T 605265 4925484
FS95	17T 605292 4925414
FS96	17T 605315 4925431

FS97	17T 605271 4925400
------	--------------------